



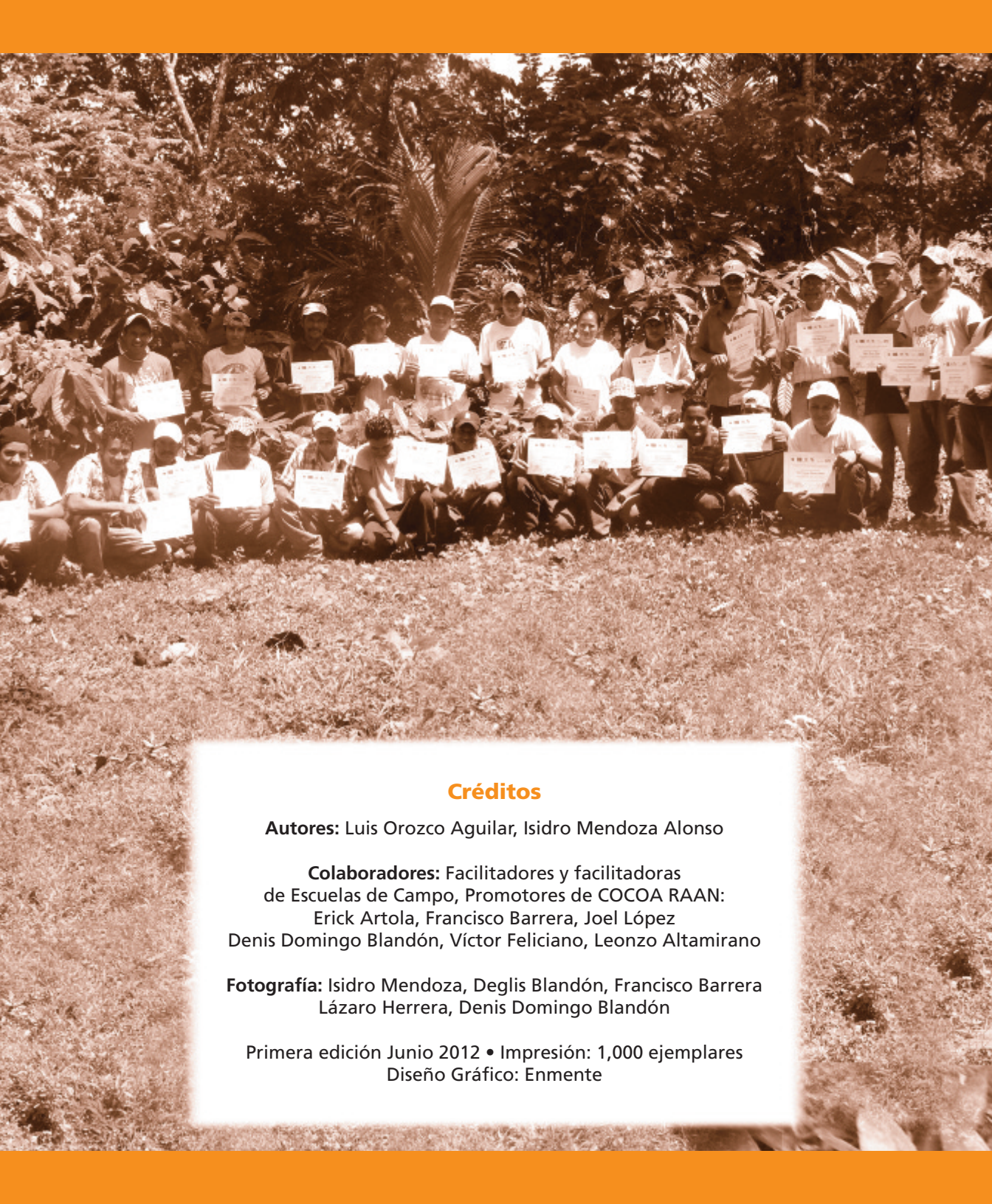
Sumalwarang balna kidi tanit na yakat ninigna kawi kiwarangki adik kakau dahyangna balna yakat,



sauni sahyahna makilwa tani yak Nikarakua



Yulwi dakanin wauhnni taya



Créditos

Autores: Luis Orozco Aguilar, Isidro Mendoza Alonso

Colaboradores: Facilitadores y facilitadoras
de Escuelas de Campo, Promotores de COCOA RAAN:
Erick Artola, Francisco Barrera, Joel López
Denis Domingo Blandón, Víctor Feliciano, Leonzo Altamirano

Fotografía: Isidro Mendoza, Deglis Blandón, Francisco Barrera
Lázaro Herrera, Denis Domingo Blandón

Primera edición Junio 2012 • Impresión: 1,000 ejemplares
Diseño Gráfico: Enmente

Contenido

I. Ais yulni dawi amput kaiwi kalahwi ECAS	6
II. Sinsni lani nunuhni kidi	6
III. Ais yah asang pas kiunin kulni kidi didahyangn balna yakat.	7
IV. Yamnin balna kidi sumalwarang balna kidi	12
V. Ais yulni adik yamnin lani balna kidi adik raan yak laihwi yayamwi dawi kakau pang mak bahawi dahnin kidi.	14
VI. Amput laihwi yamnin sipyah adik didah yang balna karak?	15
6.1. Uduhna kidi papatnin danin	16
6.2. Sumalnin tunana balna kidi yaknin.	18
6.3. Yamak pani as amanglanin kidi yamwi dahpaknin	24
6.4. Yamwi amanglaninin baraknin tani yakat	24
6.5. Danyamna dawi tanit yak duwi kiunin	25
VII. ¿Amput karang yah yul bauna as kidi mayangn kulda kat atnini kidi (eca).	26
VIII. Tang pakna	28
8.1. Kal uduhwi kulni wiuhni karak tingta yamnin kidi sumalna pani askau.	28
a. Nining kana yakatTang nika	28
b. Sahyaknin tangni ka balna.	29
8.2. kakau yamak pasyak sirihni kau rawas yakwi amang lana as wauhnita basnias	31
8.3. Yamnin 1: Minit kalanin kakau minik yapak yakwarang kidi	32
8.4. Diminik dahna pani yak laihwi kulwi dakanin waihla balna ninin bang kidi yulni.	33
8.5. Dinit damasni kidi amangni lanin ki kat dinit yak sau yak kidi lusuhni sak atnin ki	35
8.6. Amangni lanin ki dimag yakwarang kidi de yamahni satni balna bik.	36
8.7. Amng lanin ki ma sangni kidi witing dunin kat kalanin ki kakau yamak yakat	38



Nining kana

Kal uduhna tuna duwa kapat indian dawī sulani uk balnakarak panmak dahwi pā balna mahni yak America sauni pasyak ACICAFOC, kat tanit kaupak tingta yamwi aiwi baraknin lani parasni yamwi kaiwi kakau dahnih yakat , kaput bik parasni yamwi kaiwi baraknin tani yakat sinsni lani balna dawī kal uduhna satni balna yakat bik parasni kalalawi kaput laih tani balna yakwi di minik balna kidi bakan nin ma saunki pasyak, sau uk balna yak bik. Kmanah bik awaski muih balna kidi mahni parasni tingta yamwi kiwi, kulnin na lani satni kau bik yamwi yakwi uiwi adik kakau mak dahnin tani yak.

Nining launa as ki panmak dahyak balna yak kaput bik indian balna, sulani balna ukasangpas kau tingta yamwa balna dawī muih sasani balna bik adi sau sahyakna dibin Nicaragua kakau-r.a.a.n.Ta balna walwi yakwi kiwi kat minikungni lani kidi Apis disnin yulni adik pani balna yakat , kaput laih yamwi baraknin satni mahni kau yamwi kiwi kaput laih muih balna kidi yaksin yalahnin na yulni.

Adik pruyictu kidi lalah ahawa kidi laih japan adik baraknin lani balna yakat yamwi kiunin yulni dawak tingta yamwa sak kaliah ACICAFOC.

Adik tingta yamwa kalaih pruyicto kulnin lani balna uiwi laihnin yulni tunan balna sah yakna bangki:

- Dahnin pani manah Tausin as(1000) karak panmak balna dahna karang ki minik yaknin yulnin Nikarakua sasuni akat.
- Sinsni lani satni balna walwi talwi kat Kakau mak balna kidi bakan nin pâni balna yaknin ki, dahyang balna kidi mahni kat dawu kaput bik yamni apakwi tingtâ yamnin ki sau kapat, asang pas yak bik
- Parasni yamwi duwi kiunin ki Amerika pas akat Kakau dahyang balna karak.(RCPC)
- Lakwi talwi tanit yak duwi kiwi kaput bik ais kat yamna kidi bik amanglana karang.

Adik balna karak sahyakna balna tunan kau bangkidi karak niningna lauwi adik panmak dahyangnabalna karak kaput laih amang lawi sipkarangki baises parasni tingta yamwi uiwarang baraknin tani yak dawak bik bakan nin tani yak bik

Pruyictu usnit munah tingta yayamwa kidi laih sumalnin sinsni lani balna kidi disumalna, yul balna kidi sat mahni kauh walwi uduh yakna , wauhtaya as bik rawas yakna , asang kau kiunin bik saumalna, tingta yamni balna sins ni lani mahni bang ki, kaput bik sins ni lani balna kidi wirihnin bik duduna ki, adik kakau dahyangn balna karak.

Adik wauhnitaya akat bitik bahana sak ki amput tingta yamnin kidi , aisyamnin balna kidi ,tingta yamnin balna , dawu di uk balna kidi amangni lanin kat.

Kuput bik adik wauhnitaya kidi adik laihwi tatalna sak ki sumalwa muihni balna sinsni na lani bik bahawi rawas yakna sak ki.

I. Ais yulni dawu amput kalahwi adika ecas

Kulnin sinsni balna kidi kalana ki sumalna balna munah sip dai kulnin wisam as karak laihwi yamna atnin

ECAS kul satni as ki didahna sinsni lani yakat adik satni kidi pa balna mahni kau adik yayamwi kauna kul palni awas ki, kaput laih muih balna kidi talwa karak dawu laihwi yamwi amang lawi kiwi yanimak pani yakat, ECA kidi kuldi taldi yamnin dini sinsni lani as kul tani yakat muih balna bik ram amang lalawi didah yang balna, kaput laih sins lani lalahwa munah yamwi uiwi.

ECA kidi yamnin dini aski kul sumalna satni baisa yak sin as ki kat adik kulni kidi muih barak manah kakawi adik yayamwi amang lalawi. Adik yamnin satni sinsni as ki baraknin yakat adik FAO (munah yamwi didahna sinsni lani yakat dawu kasnin yakat bik)adik kurih mahni bayakwi dawu bik gabamint muihni balna bik duwi yamwi aiwi kaput bik pruyictu mahni bik duwi yayamwi. Adik ECAS kakau yulni kidi laihwi yayamwi aiwi Afrika sauni yakat dawu Amerika Makawa saitni yakat bik ; adik rampalni niningna lauwi adik sinsni lani balna kidi didah yang balna kidi yakat.

II. Sinsni lani baisa nuhni kidi

Kul sinsni lani as ki muih barak balna aman lanin na yakat, kat satni as uk ki skul uni yakat walabis yakat diyawa kidi. Muih buhas tadi munna nunuhni balna yuyulwi sinsni lani mahni walwi tunan ba yakat awi kiunin yulni kaput bik tanit kat kul yakat nining kawi kiunin kaput laih muih al kidi batangwa kaupak witin sangni ki barakwi kiwi muih mahni pasyakat.

SINSNI LANI WALYAKNA: Adik sinsni lani kaupak kalahwi kiwi kat amang lawi ta as kapat kiwi kalpakwi bahawi kulwi lakwi, biri biri yulwi dakawi sinsni lani balna yakwi yamwi duwi kiwi barakna lani yakat kakau mak yaknin yulni.

TINGNI SAHYAKNA AS KI ASANG PAS YAKAT: Sinsni lani wisamni lawi diyana, muih balna yakat, kulni lani yakat, didah yang balna yakat sumalna balna yakat, baisa yamni yaknin yulni, libitwi talnin amang lanin yulni, sauni yakat, kaput bik uni satni yamna yakat kaput laih bakan nin pani balna yakat ma sauki pas yakat, baisa bik apaknin asng pas sangni yamni yakat.

III. Ais yah asang pas kiunin kulni kawa kidi didahnin yakat?

Ninin yayamwa kat ticniku balna dawu sumalna mani balna yakat talna aslah kau manah, kat tikniku kidi kal laih watwa daih yak kaluwi naini yul baunin di as bik lakwi tatalwas daih pisni satni uk balna kidi didah yang balna kapat, kaput bik yul tunan nunuhni balna kidi kat bik sip yul yayakwas ki.

Kidi mahna sak ki kulnin lani satni mahni kaupat kalahwi wirihwi kaiwi adik sumalna balna yakat sinsni lani satni wisimni kalahwi didahnin ningning yakat, baisa laih kalahna kidi aptnah yakat muih balna amang lawa balna kidi lakwi laihwi papatwi yayakna.

Rabutna 1. Baisa satni nunuhni kidi ningning yayamwa kidi sumalna ningning yakat, dawu yamak yakat kiwi talwa balna bik, kaput bik amput yamak yakat kiwi talnin kulni bik.

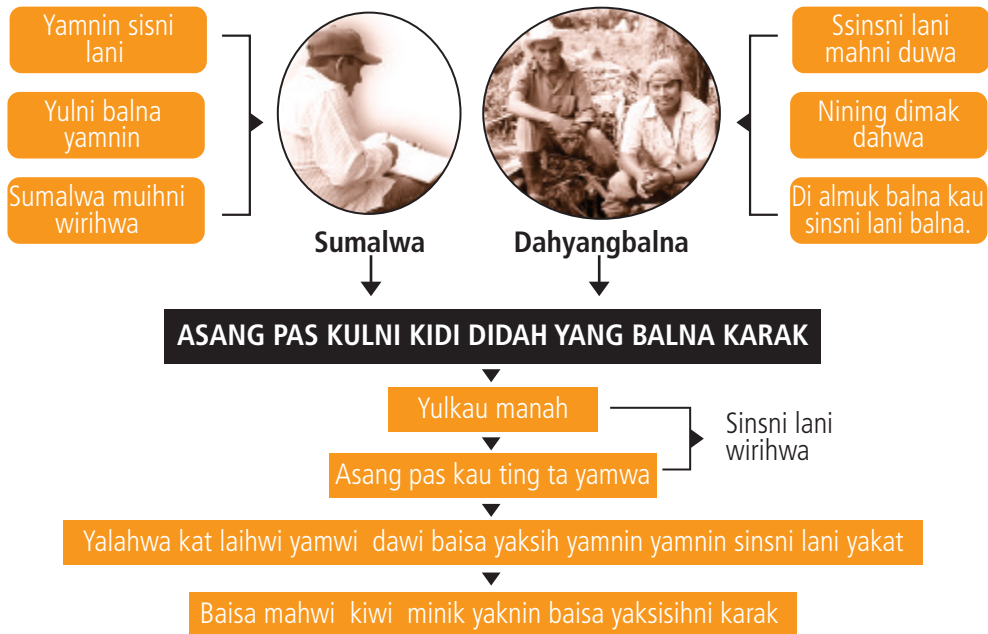
SUMALNA SATNI NINING YAYAMWA	ASNG PAS KIWI LAKWI TALNIN SKULNI SUMALNA
Nangnit lawi yalahwi baisa kau rawas yakna as	Yulni tunan ba kidi walwi yayakna ki didah yang balna karak
Sumalwa muihni laih yul yulwa muihni as dawak Didahyang balna dakayang balna as ki	Sumalwa muihni laih daduh ningningna lauwa as ki, kat amangnina laning yulni kal uduhna as kau
Muih mahni kal uduhna nuhni as kau tingta yamwa bang kat yamni yakat yamni laihwi lakwi talna ki	Tingta yamwi muih manah 25 dawu sahyakna sinka yakwi kau uduhna bikisni sinka dawu kidi bani yakat 5
Wauhtaya rawas yakna bang atnin ki ting ta yamnin yulni	Bitik bahawi yamnin sinsni lani balna kidi andik pani yak bang yakat
Sumalwa muihni kidi uba sumalyang kapat sak ki di mahni kau yamnin balna minit bayak kalduwi tihini palni ki	Didah yang balna kidi ting ta yamnin pat diyana sak ki, disumalwi ,yaklauwu sumalwi yakat dang yamwi
Tingta Yamnin balna di bulahki di uk karak yamnin diski kal uduhna di bin karak	Tingta yamnin balna kidi bitik yakat diyawi kal uduhna sahyakna bang yakat
Yakisdinin lani kidi (yamna sak ki) baisa kau yamna sak ki dauh kapat sak ki	Didah yang balna kidi lanina kidi witingna yayakwi bitik kal pak dawu
Lakwi tatalwi wais kidi tingta yamnin muihni balna kidi muih balna bulah karak	Sumalnin muihni balana kidi wal yakwi tatalwi wais kidi yah sumalna uduhna bukarak tanit kanin sip yah baisa kidi minit talyang karan ningning lauwa
Nining kana kidi baisa sau kauki sip ram yakat kalwas ki baisa parahni dawu baisa ulis para	Baisa mayak yak laihwi bahawi yamwi tingta yamnin sisi lani balna kidi baisa ma parahni kau

ECAS kidi tunan ba laih sumalwak amang lawi kiunin amput yalahda yakat kat barakwi kiunin adik muih balna yalalahwa kat, sumalwa muihni karak ningning lauwak kat witing kapat laihwi talwi amanglawi baisa tingta yamwi kiunin kakau yamak dahwi kiunin stadi munwi ais sak yakat kaput laih baisa yamni yawi kiunin yulni.

Asang pas kau kiunin amang lana kidi bitik kau dukih diyawi sinsni lani bahawi duwa bang karak mapaki muihni balna karak didahyang balna karak; Yamnin satni mahni karak laihwi yayamwi asing pas sangni kidi apakwinah dibani yakat. Kaput laih ta watna as kapat apahwi duwi kiwi sinsni satni balna karak wirihwi kal uduhwi ningning lauwi duwi kiwi baisa ma parahni kau.

ECA kidi tingta yamwa kidi baisa kidi "Yamwina amang lanin" sinsni lani kidiuduhwi yakwi amang lawi nuhni ni kalana tingta yamnin yakat asing pas yakat kaput laih ningning lauwi sinsni na kidi wirihwi amanglalawi kidi kalpakwi . Kaput laih baisa dauh kauh laihwi amang lalawi didahyang balna kidi sumalwa yakat kakawa munah amang lalawi didahnin yakat dawu baisa nuhni kalwi bitik kalpakwi ya Yamwa munah.

Figura 1. Esquema de una escuela de campo para agricultores.



Ecas kulnin lani palni laih didah yang balna kidi kawi yamwi amang lana ki kulwi talwi andik balna kidi yamnin sipki. Kaput bik witingna alas kalahwi ais yamnin kidi kat yamwi ;kaput laih adik sumalna usnit munah kulwi lakwi talwi sinsni lani tuhni kau. Kat adik uiwi laihnin kidi kunin lani kidi kaput laih didahyang balna kidi amang lanin na ki andik balna kidi asangpas kidi apakna atnin ki kaput bik dimuih balna dudutni kakau yakat daukalwa yakat.

Tunan nunuhni balna kidi yakat ECA

ECA pisni satni balna kidi laih tunan bahwi ning kana munah – lang kalahwi, kat didah yang balna kidi kawi tingta yayamwi kal uduhna pas yakat, tunan ba bik awi, kulwi talwi amput yalahwa kat , libitwi tatalwi kulnin na ahana yakat daw yamnin yakat ah kalahnin yulni adik lang kalahna munah.

Adik yak yamwi kiunin yakat muih as minik dawa lik atnin ki sumalwa muihni kidi kat diyulwat baises alas amang lawi kiwa atnin ki adik bitik kau adik lakwi talwa usnit munah , yulkulwi dakanin kalpakwa yakarak adik pani yakat.

- Tingta yamnin balna kidi yakwi dana sak ki didahyang balna karak
- Dahna pani balna kidi pani as baraknin yakat yamwa bani yakat
- Tingta yamnin pas yakat kawi yamnin daw bisni kat.
- Dimuih balna dudutni kidi yakat muih as minik danin as lik atnin karan ki amput daw pangmak balna kidi dahnin kidi.
- Tunan ba tuhni kau wal yakwi tingta yamnin yakat tanit yak bahawi kiunin di sar balna yakat.
- Didahyang balan sinsni na lani kidi kidi ka ki yalahwi tingta yamwi kiunin yakat.
- Tingta yamwi muih manah 25 daw sahyakna sinka yakwi kau uduhna bikisni sinka daw kidi bani yakat 5
- Bitik bahawi yamnin sinsni lani balna kidi andik pani yak bang yakat.
- Didah yang balna kidi lanina kidi witingna yayakwi bitik kal pak daw.

ECA adik sinsni lani yamnin wisamni awaski dauhka laih muih balna kidi di awas tatalna daih yulni; dauh kauh laih sumalna kidi tikniku kidi witing manah dinu kapat di sumal wa daih,didahyang balna kidi sins lani balna nunhni tatalwas daih witing sangnina ka yakat.

ECAS pasyakat sumalwa muihni balna anin karang ki:

a. Didahyang balna kidi sinsni na lani kidi minit kat kalanin ki.

ECAS kidi didahyang balna kidi tunanina yakat dimahni amang lalawi didahnin yakat kaput bik amang lawa bang ki yamni yakat bik dawu dutni yakat bik di minik yaknin yakat. Kidi bang ais yamnin balna bitik kau witingna bik kawu dakawu yamnin na ki ais amanglalawa yakrak kaput laih sumalna pas yak bik kakawu.

b. Pa as kidi di amanglanin pani as ki.

ECAS kidi yamni pani laih ankat didah yang balna yalalahwa yakat kaput laih baisa sirihni isi palni kawu dakakawa bang karang ki tingta yamnin yakat kaput laih minit as bik dinit kahwas karangki sins lani balna kidi lang kalna kidi. Baisa laih parasni yamwarangki kal uduhni yakat, yakat laih kal amang lawu witin kidi wais kidi , uduhna pasyak, kalpakwi yamnin yulni.

c. Didahna balna yakat barakwa mani balna yakat dawu bik mani balna kidi pa-rahni ki.

ECAS kidi yayamwa kidi baisa kidi didahnin saitni yakat kaput bik pan balna kidi ba-rakwa bang yakat. Kaput laih dimink rana bang pani as kau, sau yakat bik parasni kalanin yulni tadi munwi talwi . Kaput laih didahna balna kidi sumalyang kalwi kat witing yakat taldi baisa sirihni amang lalawi didah yang balna kidi.

d. Sumalwa muihni kidi parasni atnin ki kat yamnin tangnika yakat dawu witin amanglawu balna kidi diyana atnin ki.

Sumalma muihni kidi ram yakat amang lawa atnin ki kat witin yakluwi lang dimunwarang yulni baisa kidi didahnin ning yakat kaput laih asangpas saitni yakat. Kapat ning yak walwi anin kat kal uduhna yakat parasni diyawak tanit yak duwi kiwarang yulni.

e. Sumalnin tunan yul babauwarang pasyak witing yamnin balna yakat dukih diyawi didahyang balan yakat.

Di dahna yulni as bawarang kat tunan sahyakna kidi mahni palni karangki yul bauna as pas yakat, kidi bang ram yakat lakwi kulwi dakadi kat dadi kat didah yang balna kidi andik balna baisa dukih diyawa kidi.

f. Ta naihni as ki , dahn kalna awaski.

ECAS kidi didahyang balna yakat diyana as ki di lang kalnin yakat kaput laih kulnin lani kidi uwi laihwarang ki Apis sauh yakat laknin puhsin was ni satni balna kidi , Dauh kauh baisa mahni yaknin dawu tanit duwi kiunin.

Yamni taldarang kat ECA yulni sinsni kalana sak ki sumalnin yakat kaput kulwi rawaswi yakna sak ki kat parasni laihwi yamwi kiunin yulni kaput bik di dahyang karak.

- Yamnin balna yakat parasni kalawi ECA kidi kat ais kukulwa kat yul balna kidi wal yayakwi.
- ECA kidi baises parasni yamwi amang lanin yulni amput tan gana sak kidi.
- ECA kidi amang lawi kiwi pisni balna yakat pan mak balna kidi dahna kat baises mayang kat.
- ECA kidi baises laih tatalwi kat ah kalahnin yulni.

Wayang 2. Rikni palni kidi talwa sak kidi laih ECAS-Cacao



Fuente: CATIE-PCC-2010

IV. Sumalwarang kidi yal u al pa adik kulni pas yakat

¿Ais yah nining launin kidi u tingma kalataman kidi?

Kidik laih muih as ki tingni kau, sinsni kau bik ninig na lauwi adik didahyang balna yakat tanit yak duwi kiuni yulni, witin dimahni amang lawa yul kau, muih balna yakat isningna kat wi kiwi.

ECAS yakat sumalwa muihni balna kidi yamnin balna kidi

- Didahda yakat lakwi talwi ais dutnini sak kidi.
- Rawasyakna pasyak awi tunan balna dutni balna kidid.
- Yulwi talwi yamak pani yakat kiwi lang kalnin yulni.
- Dini balna kidi ridi munwi dawi kulnin lani kidi diyulwi
- Pasyak bitik di amukwi kalpakwi yulwi dakakawi.

Wayang 3. Sumalwa muihni pisni satni kat yamni kidi ECAS



Duwi kiwarang balna kidi sumalwa muihni

Sumalna muihni as kidi adik balna pan duwa atnin ki kaput laih tingta yamnin kidi tanit yak duwi kiwarangki yamwarang bani yakat. Adik balna kidi duwakarang ki.

Rabutna 2. Dini balna kidi duwi kiwarang ki sumalwa muihni as kidi

Yamwarang dini balna	Ais kau yamwarang kidi
Rawas wauhni taya as ki sumalwa muihni yak.	Wauhtaya panuhni
Sisir nuhni daknin	Pinsil nunuhni
Nuhni Talnin dini	Pinsil
Saha	Kulnin wahnai naini
Saha pan ting daknin	Wuhtaya rawas yakna rabutni
Kuhbil palatnin dini	Rawanin wauhni taya
Itisnin dini	Plastik

V. Ais yulni ecas kidi akat manah yamwa bang yah kus sauni yak, talwa bang kalaih cacao dawi pan karak bahawi dahnin?

Kakau kidi ma bani baisa parasni kalwi adik sau sahyakna makilwa saitni yakat adik bitik kidi amang lawi kiwi dinuhni palni nining launa as ki kat yamak yamda pani balna yakat di minik satni bahawi dahnin ki; kaput pan mak balna kidi bakan nin bik sauni uk kau bik yakwi bakan na karang ki.

Kakau dahyang balna yakat adik mani balna yakat pasyak kawi bakan nin tani balna yakat sau uk kau sihnin yulni, adik minik kidi maluih palni sak ki, kaunah dihas kau kuywas sak ki, kat tingta yamda bitik kau bitik kau yamni manah kalaswas ki di mahni bang dutni kalahwa bik, asbik kakau minik kidi papatni awaski bang kidi balna ais kaupak kalahwi minit talyang balna kidi kasuk muih balna yakat niningna lalauwas yulni, taldarangkat dakda mani, minik balna kidi amput yakda kidi, kamanah bik awaski kasut bik kal uduhna bang awas ki adik tanit yak kalbauwi kiunin yulni.

Adik sinsni lani kidi ECAS ram palni yaksihni kat muih mahni kidi kulninna dutni mahni duduwa kidi wirihnin yulni kat taldarangkat didahyang kidi witing manah talwi dunin wangki kulnin dutni karak. ECAS kidi isparah kapat as ki sins lani amang lanin yakat adik munah laih yaksin palni karang ki biribiri niningna lauwi kiunin yulni kal uduhwi tingta yamnin yakat.

Ais yulni didahyang balna yakat parasni yamnin yah adik sumalwa munah ECAS?

- Tikniku balana kidi ampudawak watwi tatalwas yak didahyang balna yakat (kat nikarakua akat lani as diski kiwi lakwi talnin didahyang balna yakat tikniku balna yakaluwi.)
- Tikniku dawi lakwi talyang balna kidi dahnin yakat amang lawa balna kidi laiwi yayamwas yah kat dahnin pani balna bani kidi sat sat ki.
- Ais yulni dis unipas muihni manah laih sip yak ais yamnin kat yamwih adik dahnin pani balna yakat.

VI. ¿Amput yamnín sipyah adik sumalna kidi ecas didahyang balna yakat?

ECAS mani balna kidi apud sahyakna sinka duwi adik tani sumalna yakat.

ECAS kidi sumalna muihni balna laih tani as ki ais yamnín balna kidi bitik sak ki kidi bang kidi munah yamwi kiuna karang ki, tinta kidi barangni palni akat sumalwa dang yamwi dawarang kat.

Rabutna 4. Sumalna sinsni tani kilitna duwi kiunin yakat ECAS KAKAU

Sumalna sinsni tani kilitna

Dankalna dawi tanit yak duwi nin

- Kulni dan yamwi Kal uduhna mani
- Mani balna tanit duwi kiuni kidi
- Nining launi kyakat yamnín balna
- Adik sinsni lani kidi bahawi yamna

Yamnín amang lanin balan kidi

- Yamak yamnín balan (AESA)
- Yamak yak kiunin mani balna
- Watwi yamnín talnín kulni yakat.
- Laihwi talnín lalah yakat.

Yamak pani balna kidi

- Yamak pani walyaknín
- Didahwi amang lanin
- Tadimunna bikis ni
- Kalahwi lakwitalnín.

Sumalnín tunan balna kidi walyakna

- Laihwi talnín aiskat sak kidi
- Bitik kalpakwi laihwi talnín.
- Walyaknín sumalnín tunan balna kidi.
- Lalah kidi laihwi talnín.

Walyakwi uduhwi danin.

- Pani balna kidi walyaknín
- Tuanah bahwa kidi amang lalawang.
- Kanin muihni balna kidi walyaknín
- Lni balna anin tingta yamwi kiwarang kidi.

6.1. walyakwi uduhwi danin

Adik sumalnin karang kat baisa kau ridi mun nin ki akat sumalwarang kidi, wais balna karak,yamnin mahni bang ki baisa kaupak, di balna kidi yaksinh yamnin yulni:

a. Pani balna kidi walyaknin.

MAMAKPA AS ATA TALAH SUMALYANG BALNA ECA.

Pa as walyakna usnit yakat ram yamni ki laihwi talnin kat tawan ni kidi amput sak yah(Didahwa yakat, dutnini balna,lalah yayakwa,sasu yulni,dawi muih yapak duwih)kat sumalwarang yulni.

Baisa laih kalaih pa balna bitik kau kakau dahyang balna karak kat ECAS kidi witingna karak tingta yamnin ki dawk bik pa binina yainit bang bang kidi yakat isnig na katning ki ECAS kidi sumal nin kaput bik lani bik sak karang ki amput walyaknin kidi.

- Lalah yaknin palni kalaih diminik daw i yakwa kaupak andik dahnin kidi.
- Nitni as sak kat uluhwi yaknin dutni balna bang kat disar balna dahna yakat daw sipki diminik balna kidi amput apaknin kaput bik praisni kalanin.
- Makulnik lak anin kat tingta yakat dulaunin yulni, baisa dala as bik duwas kau.
- Baisa kulnin kalaih Apis ma tunaki ba yakat anin ki ECA kidi yamnin.
- Pa binina uk balna ulis bang balna kidi tatalwas pa nitni lani kidi adik sumanal yakat.

b. Uduhwi diyul baunin amang lanin yulni ais yamda bang mayang kidi.

Pas tuna kidi pä binina kidi walwi yakna kat mahka laiwi uduhwi diyul baunin ki tatana balna karak , talnin ki wais balna karak Apis yulwi mayanin yakat diyulnin kat kal di-dahyang uduhna balna yakat. Adik kal uduhwi yul bauna kidi laih kulnin kat yudutni di-yamnin, kaput bik baisa muih mahni yamnin ankat sip yakat. Kaput bik ECAS kidi ais kulnin lani duwa kidi bik isning na pak nin, nuhni ni kidi kaladak amang lanin kalaih takat kulnin na lak kawi tingta yayamwarang ki.Baisa bik laihwi talnin muih balna kidi kakawarang kidi laihwi talni amput wal yaknin kidi.

MAMAKPA AS ATA TALAH SUMALYANG BALNA ECA

Kal uduhna balna karak kal pakdi yalahwi biribiri kal amang lanin, pruyiktu satni balna karak , kaput bik kakau dahyang balna kaput laih yulni balna kidi yulwi lana karang .ising palnin balna kidi satni mahni kau duwi yamnin ki adik kabamint tingta yayamwa munah (Radiu,Wauhtaya rawasna,uni na kat kiwi diyulnin,kal uduhna as kau isingna paknin) Kal uduhna uk balna karak yul baunin kidi nuhni palni ki kat adik baisa manikin lalauwarang ki barakwi kiunin yakat kaput laih kasuk pruyiktu lalahni kidi yamna karang ki.

c. Lani balna kidi anin tingta yamnin yakat.

Adik didahyang balna kidi witingna alas pramas kalalahwarang ki ECAS pasyakit yamnin balna kidi adik kal uduhna wisamni yakat. Adik tingta yakat kapakwi tunan ba satni yakwi uiwarang ki. Kat apahwarang kaupak kal uduhnnin kidi witingna yuyulwarang ki mampat yulbaunin na kidi mani awi duduwarang ki waiku as pas ya-kat.(praidy,satady, mampat kulwi tatalwak yamni kat).Kaput laih kidi mani balna kidi pini ankat uiwas karangki.Kaput laih dang kalwa bani kidi sumalwa muihni dawi, ninig lauwa muihni bik wauhtaya as kau rawas yayakna karang ais yamwi uiwarang kidi.

Isingna ilna as ki raws yakna as yamnin na kidi didahyang balna kidi tingni kau sain yamnin karang ki ECAS pas akat tanit yak bang atnin yulni.

MAMAKPA AS ATA TALAH SUMALYANG BALNA ECA

Baisa kalaih adik sumalna yakat muih bang karang ki 25 kat kaput laih ais yulwa kidi amang lanin yulni.Kaput bik yul bin dibin as yul bauwarang ki ais yamwarang ki 40 menit kapat dawi sahyakna karang uduhna dibin pasyakit muih 5 kat bitik kawi yamnin karang ki.

Adik 20 kaupak sau yakauh laih sip awas ki kat menit kidi nuhni ki kalahwas ki dawi bik uba mahni bik awski muih 30 mahni ki kat sumalwa muini kidi sip wauhwas kaldawang ki.

6.2 sumalnin tunan balna kidi walyakna

a. Laihwi talnin aiskat sak kidi

Adik apahwa kaupak muih yapak kawarang balna kidi ayang ni na anin, wauhtaya as rawas yaknin kidi muih balna kidi famali yapak kidi. Sumalwa muini karak ning lauwa amangni lanin ki adik yak baises nuhni kidi di minik dahnin yakat (kakau) kat muih balna bik yakau pak di as bik hilp ni nunin na sak karang ki. Sumalnin tunan balna amangni lanin ki mampat mani kat yamnin kidi dahnin mani balna kat, kidi awas minik yaknin mani balna kat kaput sumalwi kiwarang ki.

Adik kulnin sinsni lani balna kidi laiwi talnin muih balna kawi yamwi duwi kiwi yulni, kaput bik amang lanin ki lalah yakat bik kulwi talnin ki.

b. Bitik kalpakwi laihwi talnin

Pat kidi yulni balna bitik kau diyulwi isning na pakna kat dawak tanit yakat muihni balna kidi walyakna atnin, kaput bik bitik kalpak wi laihwi talnin ais sak kidi dawik bik andi tawan ni karak kalahwarang kidi sumalnin yakat.

ECAS kidi yamni kalahnin kat nuhni palni ki yamwi kiunin bitik kalpakwi sumalwa yakat kanin: Didah yang balna kidi wat bu kau kal udhwi waiku as pas yakat kapat manah waiku tiyas kau as kapat, kaput laih sinsni lani balna kidi dunin yulni adik laih yamni kalahwarang kidi kakauni yamak yaku karang ki. Tuna talnin kalaih dutnini balna kidi pas amang lanin ki kat kidi munah ning yak kal baunin ki tingta munah.

c. Walyaknin sumalnin tunan balna kidi.

Tikniku yulni kidi amang lanin kidi kal udhwi bitik laihwi yulwi tanin kaput yudutni atnin ki. Adk ecas kidi ram palni yak sinh kidi munah mayawak amang ladi amput tingta yamwi kiuni kidi kalpakdi adik sumalwarang yakat udhna pasyak.

Tuna bahwa yakat adik tani mayawi:

- Adik munah laih amang ni ladi yamnin balna kidi amput didahna mayang balna kidi tanit yak duwi kiunin kidi kasuk maintalnin yakat barakwi minik yakwa kat.
- Adik maniking lauwi sumalnin tunan balna yaknin yakat dawik bik ais kau duwi sumalwarang dini balna.
- Nining lauwi ais yamnin balna kidi wauhtaya as rawas yakwi yamwi kunin yakat baises kidi disar balna kidi barakwa bang yakat.
- Akaupak nitni lani balna mahni kau mayawi tunan balna kidi dutni ni kalpakda munah amangni ladi bitik kau kalpakdi.

■ Kaput bik yul mahni kalahwi kidi balna kidi tingta yamnin balna pasyak anin karang ki didahna mani balna yakat.

Mayang kuldi sumalna tunan yakna bang kidi ram palni muhi balna kulnin lanina ki, dutni balna kalpakwa munah walwi yakwi ahana bitik kalpakwi; kidi bang adik sauni sahyakna makilwa saitni didahna barakwa bang kidi laihwi tatalna adik kulni balna kidi wat 10 yamna atnin kadi balna laih adika:

1. Pan mak rawi yaksin main talwi kiunin
2. Pani walyakwi dawi dahnin panan binina.
3. Sat ni uk kau bik kakau kidi minik yaknin dawi bik kakau tapan yakwi birnin.
4. Yamnin dawi utuhnin sau parasni dunin yulni .
5. Ting ni daknin satni balna:yasin baraknin,tingni dau kalwa kidi daknin,yamni main talnin.
6. kakau kidi amput kidi dawi bik pulun kau kalawak kakau mak mahni yaknin.
7. Tanit daknin dimuih dutni balna kidi dawi yamahni balna.
8. Laihwi talwi dawi amput ma sangni kalanin kidi
9. Kakau yamak wisamni yamnin dawi wat kaladak minik duwarang kidi
10. Maniking lauwarang kidi dawi kakau kidi minik yamni yaknin kidi.

Rabutna 3. Rawasyaknin kulni sumalna as pas yakat ais kiwarang kidi.

Didahna mani balna				
Asang pas yak tingta yamwa- rang balna kidi				
Tikniku ais yulni lik kidi				
Dini balna				

Rabutna 4. Sumalna tunan balna balna kidi yalahwi walwi yakwi kulni ul yakat adik kakau dahnin sinsni lani

Herramientas	KURIH AS PASYAK WAINIKU											
	1	2	3	4	5	6	7	8	9	10	11	12
Apahna 1: pan wisamni dahna												
Pani walyakwi dawi dahnin panan binina					■	■						
Dahnin minik balna walwi yakwi dawi pan binina kidi apakwi kiunin	■	■	■							■	■	■
Kakau ting kidi walyaknin tapan birnin yulni			■	■								
Yamwi dawi sau yakat parasni kalanin					■	■				■	■	
Apahna 2: Panan balna minik wa balna kidi tanit yak duwi kiunin												
Kakau yaksihni minik yang balna dwai pulun kau bik minik nin yamwa			■	■								
Kakaku Tingni satni balna daknin kidi					■	■			■	■		
Dimuih dawi yamahni balna kidik tanik daknin					■	■			■	■		
Laihwi talnin dawi masaanni kalanin kidik kakau yakat					■	■						
Wisamni yamwi dawi watwi kalawak minikwi kakau yamak balna yak						■	■	■				
Diyana muihni balna dawi baisa yasihni minik yaknin	■	■								■	■	

Rabutna 5. Di dahnin mani balna yakna bangki dawu sau yak parasni kalawa utuhwas dahwa kidika sauni sahyakna ma kilwa saitni yak. Nicarawa sauni yak

Tingta yamnin balna tanit yak duwi kiunin kakau yakat sau yak parasni kalawa utuhwas dahwa kidika sauni sahyakna ma kilwa saitni yak. Nicarawa sauni yak	KURIH AS PASYAK WAINIKU											
	1	2	3	4	5	6	7	8	9	10	11	12

Apahna 1: pan wisamni dahna

Pani walyakwi dahwa				■	■							
Dahnin minik balna walwi yakwi rawi									■			
Pan binina rawak uhusna kidika amput maintalwi kiunin kidik.	■	■	■	■						■	■	■
Kakau ting kidi walyaknin tapan birnin yulni			■	■								
Watwi tapan birnin dawu pan binina maintalnin				■	■							
Dahnin pani balna yamwi dawu pan binina kidik yakwi dahwi pani diyawi.						■	■					

Apahna 2: Panan balna minik wa balna kidi tanit yak duwi kiunin

Yanimak bauwi dawu dinit lawi.	■					■			■			■
Yamahni dutni kidik disnin dawu minik daukalna kidik yakmuknin.	■	■	■	■	■	■	■	■	■	■	■	■
Kakau kurih 1-5 duwa kat tingni dutni balna dakwi yakwi yamni baraknin yulni.												
Kakau bararakni kidik tingni dudutni kidik dakyaknin kurih sinka tanit kauh.	■		■		■		■		■		■	
Sulani uk uhusna kidika dakyaknin.		■		■		■		■		■		■
sau yak parasni kalawi wasni balna.												

continúa --->

Tingta yamnin balna tanit yak duwi kiunin kakau yakat sau yak parasni kalawa utuhwas dahwa kidika sauni sahyakna ma kilwa saitni yak. Nicarawa sauni yak

KURIH AS PASYAK WAINIKU

1	2	3	4	5	6	7	8	9	10	11	12
---	---	---	---	---	---	---	---	---	----	----	----

Apahna 2: Panan balna minik wa balna kidi tanit yak duwi kiunin.

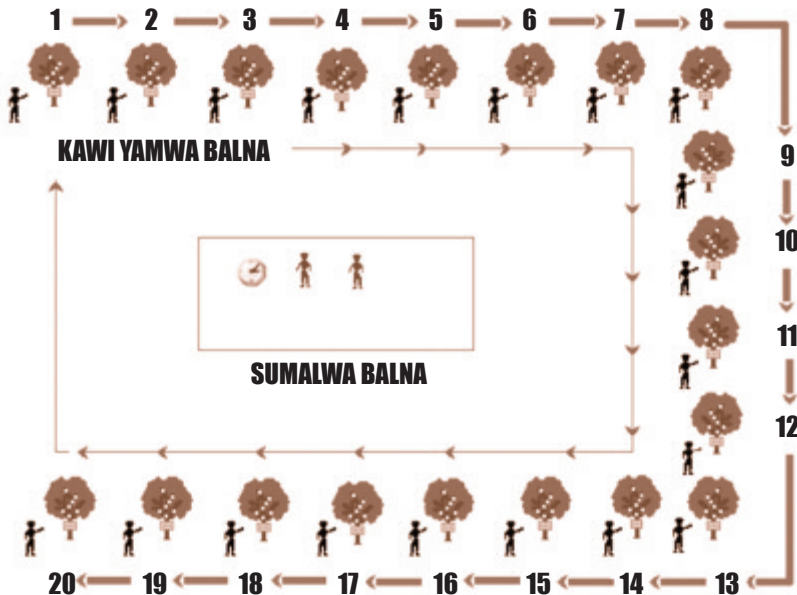
Masanni kidik witing dunin kat kalanin.												
Dimuih balna kidik amput inin.												
Diyana balna dawu minik bakanin balna.												

d. Rabutni wayang nininkawi

Laihwi talnin kidi muih balna sinsni lani yaka adik kakawa kaupak kuldi taldi nuhni palni kaldi ningning launi ki sumalwa usnit kau yakalauwi. Rdimunnin ki yamak pan dahna yakat kat sirihni laihwi talnin yulni ais amang lalawa kidi ais tatalwa yakat rabutna yakat.

Adik laihwi talnin yakat rabutna adik apahna kaupak dawu kulni dang kalwa yakat adik sinsni lani as ki kal uduhna pasyakit kaput bik muih balna kidi ampat di balna yakat kawi yamwi uiwa kidi bitik kau talnin ki. Laihwi talna kidi yakat yamwarang kidi sumalna balna munah yakwi yulwi takawang ki kakau yaulni balna kidi ECAS yakat kaput bik yamak yamna kidi kaput di ram dini manah yulwi dakanin. ----->

Wayan 5. Nining kana yamna rabutna as yakat



Wayan 6: Wayaki talnin rabutna as kidi kidi sumalna ki sumalwarang balna yakat



6.3. Yamak pani yamwi dawi adik kilni kanin yak amang lanin yulni

Adik nuhni palni ki adik yanimak kidi tingta yamnin pani as karang yulni kasuk wal yaknin karang ki pani kidi baisesa laih atnin ki , kaput papus yak sak atnin ki kat muih mahni bik aiwarang yulni kau.sip atnin ki buas walyaknin dawi sumalwa balna kidi mani balna kidi awi watwi tatalna karangki laihwi talnin yulni didah yang balna yaninamk yakat.

Kunin lani balna bang kidi yamak as kidi amput wal yaknin kidi adik balna ki:

- Yamak walyakna kidi papuskat atnin ki dawi sauni satni kidi , was bik ulis atnin ki, panan blna kidi minikwa atnin ki dawi bik uk bik duwa atnin ki.
- Yanimak kidi kawi kiunin bik isi atnin ki dawi bik muih balna bik yani mak kidi talni laih atnin ki Yanimak kidi daklana lidi tas arung duwa atnin ki , kidi 1mz.
- Yanimak bik dibitik yaksin atnin atnin awaski kat kulni kawang balna kidi dutni balna kidi munah yamwi amang lalararang ki, kaput bik uba bik dutni bik anin waski kat adik munah di amang lawarang bang ki adik kulni kawang balna kidi wat aba dutni laih di as bik amang lalawas karang ki.
- Yamak daniwan bik kulni yaksin karak diyawarang ki kat didahnin mani balna bitik kidi yakat yamwi amang lawi bayayakwarang ki didiahni yakat.
- Kawarang muihni balna bitik kau ah kalahna bang atnin ki adik yanamak kidi walyayakna yulni.

6.4. barakna kulninyasihni karak duwi yamwi kiunin

Tuan bahwa kdi laih tadi munwi talna as yamak kidi ampat sak kidi dahni tangni kalna kidi laihwi kulwi tatalwi,kidi kaki tunanba palni kidi yasih palni ki adik wauhnita sutni yakat tang pakna wih ki tani as kapat amput yamnin kidi kaput laih amang lawarang kidi satni balna kidi laihwi talnin yulni.

Kul kayang balna kidi sip ki nining na kana as yamnin praptis kapat ais yayamna kidi uk kau kaput laih ais amang lalana kidi baisesa bik tanit yak duwi kiunin yakat muih balna uynin karangki adik yakat tingta yamyang balna karak.Tanit yakat kiwarang kat rabutna wayani as yamnin karang ki; kidi laih talnin yulni ais kat sinsni lani kidi amang lalana kidi

MAMAKPA AS ATA TALAH SUMALYANG BALNA ECA

Ma ising ainin ki yul bauna bitik kau walnin ki muih bitik bang atnin ki su-malwa muihni kidi yamnin ki .Adik pasyakat kal pakwi sinsni lani balna kidi biribiri wirihwi kiunin yulni adik yamwa kaput duwi kiunin ki kal uduhna pas yakat bik kaput laih muih didahyang balna kidi sang bang karang ki.

6.5. Dankalna dawit tanit yak duwi nin

Kulnin lani laih muih kul kawa balna yakat Apis alasna diyamnin ki wauhtaya as diyawarang ki yakat yulwarang ki "Daidahyang stadi munwi wisamni amang layang as" Kaput bik nuhni palni baraknin ki rawas yakna as sak as sak atnin ki adik kal uduhna yakat ais yamwi uiwarang kidi tanit yakat. Adik kaupak laih laihwi kulwi talwimkiunin ki amang lanin balna kidi yanimak yakat yamwi kiunin. Kaput bik wat wat yamnin sipki adik wayani rabutna kidi.

Wayang 7 d 8. Sumalwa balna kulnina Dankalna asng pas yak sinsni lani balna.



Kiwi lakwi tanin kidi di awas kapat laih awski kaunah yamnin dini as ki adik kaiupak sipki duwi lakwi kulwi dakanin. Kaput ais yayamwa balna kidi rawaswi duwi kiunin ki sinsni lani balna kidi amang lalana kidi ECAS kaupak. Kaput sipki wirihwi bik kiuninak ankat sipmayang kat. Lakwi talwi dawi tanit yak duwi kiunin bitik kidi ram ais yakat yamnin ki.

Rabutna 6. ECAS yakat yulwi raws yakna dibin as adik lakwi talna yakat.

wais balna bang kidi	Ais yak lakwi talwi	Yamnin dini balna kidi kau lakwi talnin kidi.
Didahyang balna	<ul style="list-style-type: none"> • Dini yamnin balna yakat wirih nin. • Yamamak yakat satuk kau wirihnam ki. 	<ul style="list-style-type: none"> • Lakwi talwi didahda asngpas pasyak kat. • Sinsni lani balna wirihnin di dahyang balna uk karak • Lakwi talwi/libitwi talnin.
Sumalwa balna	<ul style="list-style-type: none"> • Tanit kau balna bitik kau (lang kalahna balna kidi yamwi kiunin ki) • Niningna launin didahyang balna kidi ECAS kau kakana kidi 	<ul style="list-style-type: none"> • Kiwi lakwi talna Bitik kidi rawasna sak atnin ki • Kiwi lakwi talna kidi tanit duwi kiunin didahyang bal-na yanina mak yakat. • Dauh yamwi talnin as rabutna kidi.

VII. ¿ECAS as kidi yalahwi yul bauwi talna as wisamni as yamni kidi ?

Tuna bahwa kaupak yul bauwi laihwi tatalna kaupak isning pakna kapat kaput bik ais wawatna kidi balna uduhwi yamna as kidi:

Rabusna 7. ECAS yamnin balna yakat ma as satni as kakau adik sau sahyakna yakat RAAN.

Yamnin	¿Ais yamwi?
Yamni aiwandah dawi ninin-kawa	Apahwa yakat karanin satni diyawak alasna duduwa dawi ma as pas yakat ais yamnin kidi. Mani : 15 minit
Laihwi talwi yul bauna tanit kau duan dai	Yulwi dakawi adik kulwi talnin yulni yapak amang lalawih tanit kau yul babauna daih. Sumalwa muhni as klahwa yulni kidi bahawak laihwi talnin adik rabutna yakau. Mani: 15 minit

Yamnín	¿Ais yamwi?
Ninigkawi dawi sumalwi tunan balna di sumalwi.	Sumalwa muihni kidi amang lanin kidi tunan duwi kiwi parasni yamwi kul balna kidi dawi sinsni lani biri biri wirihwi adik didah yang balna kidi, pini bik sumalwa muihni kidi aymni amang lawas kat sumalwa muihni uk kau bik yulwa kiwi nining launin ki. Mani: 15 minit.
Yamwi barakwi duwi kiunin praktis	Adik laih tingta yamnín karangki yamak balna yakat di sumalna kidi praktis duwi kiunin adik kanin balna kidi. Nitni bu kau duwi: Adik sirihni palni laihwi taldi ais amang lanin balna kidi didah yang balna karak adik sinsni lani balna duwi angkat pa uk kau bik duwi yamnín kidi. Adik kal uduhna tuna kau kakana daih kidi. Mani :1 awar.
Laiwi dangyamwa dawi yamnín kidi	Watwi adik yul bauna balna kidi tingta balna satni kidi yaksihni kidi sinsni balna kidi wisamni kidi duwi. Kaput bik tingta yamnín balna kidi danin ki kat unina kau yamnín yulni dawak wat kal uduhwarang yakat talnin yulni. Mnai: 15 minit
Yalahwi tingta yayamna kidi laihwi talwa.	Amang lanin kidi yamni ki Apis nining launin dawi biri yulwi dakanin baises kidi ais kau duwi yamnín balna kidi ECA yakat .Yulwi dakanin balna kidi baises isi kau: andi balna kidi wisamni amang lana balna kidi? Adik kakau yamak balna yamnín ki? Baises ais yak yamwi dukiunin yakat tanit yakat adik ECA. Mani: 15 minit.
Yulwi dakana nuhni kidi.	ECA Baises nuhni kidi yul balna nuhni dawi muih balna kawa balna kidi.
Mahka kiwa	Dinit kahnin awaski isning pakanin mahka yawamang kidi kul kawa balna bitik kau.

VIII. TANG ANA

8.1. ECAS yakat praptis kalanin adik kal uduhna yakat

a. Nining kana kidi sinsni lani balna tiknika balna kidi.

Diwail as yang: Tuyulni yakat awang diyulnin ki yaklauwi yulwang ayangni, kurih, dawi dini wail karak ais yulni kal libitwi was yah ais yulni. Tanit yakat nining kawa kidi kaput bang muh as kau wal yakdi paknining kanin kaput tanit kiunin.

Ayang balna kidi tang ana: ayang ni yulwi dawi usnit yak yainit kau muh sak kidi ayangni yulwi dawi watwi ayangni yulwi uk balna tanit kua bang dai kidi yuulwarang ki. Tunan ba kau yakisdana as ki. Wirihwi yamnin sipki diwail ayangni as karak bik sipki dawi bik amput kaida kidi bik yamnin sipki.

Bubu ayangni na yulwa: Di yulnin ki kul kawa bang yakat walyakwi dak bu tingta yamnin yakat. (baisa kidi wanaihni as kidi kal tatalwas atnin ki dawi yal as dawi Al aning ki) wanaihni karak minit 5 kapat kal pakwi ayang ni na, marit yah, ankaupak uk bik yuwi dakanin. Dan kalwa rang kat kal uduhna tuyulni dadawak yakaluwi yuwarang ki.

Sau isihwi: Muhi bu tingnina laihwi (uh) dawi pas yak as ahawi (wayaki sak ki) tatuna kidi sarahwi yulwarang kat wayaki ki tarang kat kalahwi uk yakat kiwang ki wat las kidi sau isihwi dawak bitik dawi alah uwi tingnina bik dadawi dawi watwi tingnina lalahwi.

Yasihni: Pasyak kul kawa bang kidi ayangnina yuyulwi dawi ampat kidi as yulwi ais adimas kau kat yakau duwi yulwarang ki:

Wayan 9.
Yakisni alasna diyamwa



Supai uni:

Ais balna kidi: Untak tulna, pas yak bang kidi

Muih as duwi wauhtaya Tuyulna duwi laih dawi ayangni yulwi dawi rumwi muih uk yakat kaput manah tanit yak kiwi. Usnit yakat watwi nawatwi kaiwi kidi awas kat tuna rurng na yakat kalawi.

Matsh

Ais kau yamwarangki: Matsh uni kau.

Muih as kidi dalwi duwi yaklauwi ayangni yulwi yul bauwarang ki ankat dalna sak kat yulwa sak karang ki piwa kat dawarangki.

Sutwi dutwi.

Ais kau yamwarang kidi: Pinsil,wauhtaya,plastik wahni naihni.

Ayangni dawi kurihni karak yulwi dawi kal parna tus yakat kawi nuhni kaupak dibin kat las kidi sutwi ayangni bitik yulwi,kurihnina nuh yapak bang kidi.bitik bayakwarang kat dangnina yakat ayangnina ulwi pana sak kidi yalpamwarangki dawi yakaupak yuyulwarang ki muih ayang kurihni yapak amang lawa kidi dawak wais kidi baisa mahni yulwarang kidi win kalahna ki.

b. tingtawargni wisamni sahyakna tani balna

Ayangni ki andi abidinma kau kalahwa kidi kau yulwarang ki:

Kulnin lani laih: uduhwi kal amang lanin kidi awas kat tingta as yamnin kat bik.

Baraknin: Bitik uduhni muih yapak kidi ayangni kidi abidima as lah kalawa balna karak kidi aws kat ayang ni tuna yakat yul bu libitwa yakat yulwarang ki.

Satuk kalahwa: muih balna kidi sainni aslah kidi awaskat batangna mani balna kurihni wainiku karak libitnin.

Pa dawi tawang nuhni:

Baraknin: Wauhtaya as diyawarangki muih balna bang yakat tawan ni ayangni pa aslah balna kidi kal uduhwi mahas bang karang ki. Ma uk yakat watwi wauhtaya as diyawarang kidi laih pa uk uk kaupak Arungka kalalahwarangki kaput laih biribiri yulwi dakakawarang ki.

Inbauna as kau sahyakna karang:

Sumalwa uni yakat wauhtaya lamna manah bang karang kidi sim muih bang kapat. Wauhnytaya yakat ayangni na as sak karang ki kaunah inbuana as karak parasni inbauwarang ki kaput laih bitik inbabauwarang ki. Kat inbaunin balna kidi mahni bang karang ki baisesni sah yaknin sipki.

Libitwi yulna as:

Wauhta bing bikisni dakwi kauna kat muih yapak bang yakarak kal uduhnin yamwarang ki. Kaput bik di uk kau bik yamnin sipki waysni kau kulnin dini kau, kahnin satni balna kau bik karang ki.

Sinima dauyatah:

Kulnin lani laih Uduhwi ting ta as yamnin.

Ais kau yamwarang kidi: kawarang muihni balna , sini dawidwayani balna.

Baraknin: Sini dinit yakat wayani as birna sak karang ki kulni kawa muihni kidi sinini yakat truk awalik yakarak wayani aslah balna kidi manah kal uduhwarang ki.

Auhni dakawa yakat

Kawabang muihni balna kidi panikit kau pak yayakwarangki di bas praisni uk balna yakat diyulwarang ki, ais yulni manna karak duyawa manah adik dini balna kidik (Baisesni sirihi yulni kulnin yakat yaksih dakawa yulni) Kaputlahi diyulwi dakanin di bas yakaupak andik baisesnuhni kulwa kidi an praisni kalata man dawidwayani ais yulni. Uk balna kidi yulwi dakawa warang ki di bas yakwi nining na kana kidi yulni.

Yul bautah wayan karuk

Kulnin lani laih: Tunan ba kidi kawak duwi amang lawi tingni kau yulwi yaknin yulni.

Aiska yamwarang kidi.

Baraknin: Di ayangni rawsnin wauhtaya yakat kakau yamak yakat uiwa balna kidi,ayangni balna kidi pakni bing as kau awi dawidwayani kal uduhna balna yakat diyulnin yakwi yulwi tatalwang ayangni kidi amput rawasna sak yah, muih as bani yaklauwi yakwi yulwi talwa rang ki kaput bik muihni as kau talwaskau yulwarangki kidi ais karak libitwi.

8.2. Laiwi talnin sirihni palni adik kakau yamak as kau.

Ayangni daniwan kidi: Pani:
Prumutur ayangni (a.y): Mani:

kakau yamak yakat ais duwa balna

Pani: kurihni :Ais kurihni
Kakau panan kidi nanaini:mita.....Panan yapak bang kidi:
Nai laihni dahna kidi:m Papatnin; barangni anin Barangni awas
Akas sangnini dauhbin Papusyak aba
Ais satni panan balna kidi sanni duwi.:
.....
Kakau mak buhna kidi kurih as pas yak: Baisa mahni kidi:
Bubin minik yakwa kidi: Dutni balna baisa nunuhni kidi:.....
.....

Yamak wayani

kakau pani balna kidi wayani yamnin karangki yamak paskau pan dahna duwa
pa awaskat dispa kidi balna kidi laihwi talnin.

8.3.Yamna 1: Praisni kalanin kakau mak kalahwa kidi

Mani kuldi talda yakat: ma kirana 4 Nu. Yalahwi yulbauna as 1

Kulnin lani balna:

- Yuni balna mahni kidi dunin praptis yamnin yulni kakau kidi tanit yak duwi kiunin.
- Amang ni lanin baises dutni ni balna kidi nunuhni kidi dawitanyak didakwa kidi didah yang balna yakat.
- Mani balna kidi rawsyaknin ki adik kulni sumalwarangkidi ECA yulni.

Ais kau yamwarang kidi: Pinsil nunuhni kau, wauhtaya nunuhni, pin munnin balna kau.

Amput yamwarang kidi

Kal uduhwarang pani: Nining lauwak kayang balna bitik kalpakwi laihwi talwi ais yakat nitni sak yah kakau dahyang balna kapat.

Kakau dahnin ul yakat minik yaknin ul yakat,sauni ridi munwa kaupak,simik sau yakat rawa kaupak,dahnin,puluwa,minik bik kalwa kidi,minik yakwa, sapahwa, dawit minik buhwa kat.

Watna bani yakat ais yuni balna kidi uduhnin kat adik kakau dahyang balna kaupak,minik yayakwa yakat. Main tatalwa yakat pan uk karak bahawi dahwa kidi adik minkwa kat, kaput bik dimuih balan dawit yamahni satni yakat tanit dahnin kat , tingni balna dakyaknin , sau yakat parasni kalanin, dawit minik yawit amput apakwi duwi kiunin yakat

Dahyang balna unina yakat: Kal uduhna dibin nina 4-6 kalpakwi watwi talnin kakau yamak balna yakat. Yalahta kalpakta yul bauta laihta talnau dutni balna bang kidika didahyang balna kidi ais want karak. Adik wat ta mana munah lakta talamah amang lata manh ais dutni sak kidi.

Nawatwi kal uduhna pani yak kal uduhnin: kal uduhna bani rawasyakwi kal uduhna uk balna yakat yaklauwi yuyulwarangki ais tatalna kidi(wauhtaya,pinsil nunuhni dawit pin munnin bik) Yulwi dakawarang usnit yakat laihwi tatalwarang kidi mani balna kidi mampat yamwarang kidi kaput laih wauhtaya basni as kau rawas yakwarang ki barakwa balna manah, uk kidi minik yang manah,kaput laih main talwi kiwarangki. kaput laih talna as ki didah ayng balna kidi laihwi amanglawi wisamni bik sinsni lani yaknin adik kalahwak amang lawi kiwi ECA.

Yulwi dakana balna kulwi daknin yulni.

1. Didahyang yakat,¿Andik balna yah baisa nunuhni kidi dutni balna yakat kakau mak yaknin yakat?
2. ¿Andik manini balna yakat yah kakau kidi baisa dutni kalpakwa kidi?
3. ¿Ais dudih adik dutni ni balna kidi minit bayaknin?¿Uk sakyah adik dimuih balna kidi tanit yak wauhwi kiunin kidi?
4. ¿Andik balna yak dutni ni balna kidi kalpakwi adik kulni yakat kalpakwi didahyang balna karak?¿amput?

8.4. Didahda kidi asangpas sang kidi dawu waihnila balna kidi

¿Amput bang yah dimuih bikisni satni balna kidi kakau yamak pasyak?

Watna

1. Tuna bahwa.

Ais yulwa balna kidi adik yulni sinsni lani balna kalawi amput tan gana sak kidi, kasnin balna yakat, ninin dimuih balna kaupak bik tanit dadakwi, adik minit 10 kawa bani yakat uduhna sahyakna kau.

2. ¿Ais sakyak dahna bahawa yakat?

Amput biribiri kal papakwi disangnika duwa balna kidi, wawatwi,ridi kalahwi dawu yul bauwi dakakawi.

- a) Wayani as yamnin ampat satuk kalna kidi adik yanimak tadimunwa yakat libitwi talna as kurih 50 bayakna yakat dawu waradi kurih 10 bayakwa kat.Yusmunnin ki wayani as karak andi wirihwa kidi.
- b) Wal yaknin di satni kau didahna pas yak amput tang pak wi kiwa kidi kaput laih sinh kapat sak ki kasnin dini kauh bik kakau pas yak.
- c) Rabu tna as pas yak dauhbin kau rawas yakna as yamna sak ki wais balna kidi dimuih balna yakat dudutni yak kaswi dang yamwi. Niningkawi.

Sangka iwa ayangni	Asang pas yak sang kidi ayang ni.	Dahnin ayang balna
Supai	Usnit kaswa balna	Nining waihnila balna.
Pan Wapu	Dahyang	Didamas

d) Ampat yayamwa kidi adik nining dutni balna yakat kakaswa kidi. Yamnin ki adik 5 kal uduhna yakat. Adik rabutna yakat nining kana as dawi.

Satni balna kau tanit dakwa balna	Ais yamwi dawi tanit dakwi	Ais kalahwi uba mahni kat. baisesa yamni ki?	Ais yak kal dau kalwi.
Supai	Tanit dakwa kalaih laihwa kalih uni yamna yakat bayakwat bir-watwi witin kat dibik kau laihwi.	Laihni balna kidi dibin ki andik balna kasnin manah laihwi, nuhni laih awaski.	Witin bik uk yakluwi kal kakaswi uhuh nu-nuhni dawi tamba kaput ipamwi.

f). Watwi laihwi talnin wauhtaya nuhni kau rawasyakwi dawi dahna pasyak amput sak kidi yamni ki yamni lakwi talnin ki adik rabutna as kau.

¿Ais yulni uba dau kalna yah?	¿Ais yamdak apis kalwarang yah dutnini adik?	
	Didahna	
	Asangpas awaih kidi	
	Tanit dakwi nining kau.	
	Sinsni lani tuhni kau walwi tanit daknin di-muih dudutni yakat.	

3. Lasyakat yalahwi bitik kau yulwi dakanin ais tana mayang biti kau kal uduhna satni bitik.

8.5. Laihwi talnin ki didamas kidi amput sauni yakat muk dunin kidi.

Didahyang ayang ni: _____ Mani : _____
Didahna: _____.

1. Amanglaniki ais dinibasta kidi satni balna bitik kau basni yakat andik uduhna yakat kawa kidi. Laihwi talwi walyakwarang ki amput uhuswa kidi.nining kana.
2. Sahyakwi uduhna dibinina kau tani watnin kidi 20 pa 5 kau bitik dawak 100 watna kalwi usnit yak papusni as yakwi.
3. Adik watna balna kidi kulna kidi bayuk atnin awaski pan kulna 3.
4. Rawasna yamwa atnin ki adik susma tuanan yak dibasta dutni sak karang kidi dis satni as lah.
5. Rabutna tanit kau sakyak bangnin ki.

Dibasta satni		Yapak	Bitik	Ampus duwa kidi
1	Basni nunuhni dauwas			
2	Basni nunuhni dauwi kurih as.			
3	Sirsir dadauwas			
4	Sirsir dadauwa			
5	Tutuk			
6	Dibasta uhna buhna			
7	Sauh pauni			
	Bitik			

6. Duwi kiuninki ningninanin kidi adik atni bani yakat.
7. Kal uduhna yakat yulwi laihwi tatalwi adik yulwi dakana bang yakat:
 - a) Dabasta yayakna kidi yamak pasyak baisa mahni dawu dudutni kidi?
 - b) Dibasta satni bitik yakna kidi kakau yamak pasyak kidi dutni ki?
 - c) Amput adik kalmamahwi dibasta yamak yak yayakna kidi?
 - d) Ampat kaldakawih dibasta dudutni kidi ma sangni diskat?
 - e) Amput dinin sipyah dibasta yayamni kidi, dudutni laih awaski?
 - f) Andik dinibasta yak kakau yamak yak yaksih karang kidi?
 - g) Amput tanit dakdi dibasta dudutni kidi adik kakau yamak yakat?
 - h) Ais yulni nuhni yah dibasta dudutni balna kidi amangni lanin adik kakau yamak yakat?
 - i) Andik karang yah baisa yamni kidi?

8.6. Minikwa kidi amangni lawa kidi dawu yamahni satni laihwak tanit daknin.

1. Baisa yaksihni ki amangni lanin minikwa kidi kakau yamak as kau, amanglanin ki dimuih dudutni bik dawu yamahni dudutni laihwa kidi laihnin awas yulni.
2. Isning paknin adi rabutna kidi bang nin yulni kaput laih amang ni ladarang ki.

Sahyakna Nuhni as

No.	minikwa balna yakat dutni kalpakwa kidi									Yaksin yamnin lani		
	Mlnikyakwa			Yksih barakwa			Barangni barakwa			Ayangni anin dimuih dutni balna dawu yamahni bik		
	B	R	M	B	R	M	B	R	M			
1												
2												
3												
4												
5												
6												
7												
8												
9												
10												

B= Bueno R= Regular M= Malo/Y=Yamni W=wayakani D=Dutni

Sahyakna Nuhni as

No.	minikwa balna yakat dutni kalpakwa kidi									Yaksin yamnin lani		
	Minikyakwa			Yksih barakwa			Barangni barakwa			Ayangni anin dimuih dutni balna dawi yamahni bik		
	B	R	M	B	R	M	B	R	M			
11												
12												
13												
14												
15												
16												
17												
18												
19												
20												

B= Bueno R= Regular M= Malo

- Sahyakna 5 bangwi dawi baisesi ki papus kkat yaknin kidi.
- Bitik uduh dawi aslah kau rawas yakna as kau bangwarang ki.

Boque SAH-YAKNA NUHNI	Minikwa balna yakat dutni kalpakwa kidi									Yaksin yamnin lani		
	Minikyakwa			Yksih barakwa			Barangni barakwa			Ayangni anin dimuih dutni balna dawi yamahni bik		
	B	R	M	B	R	M	B	R	M			
I												
II												
III												
IV												
V												
%												

5. Rawas yakwi laihwi tadi munwi yakna kidi aput kilitna yakat amangni lawi 2 u 3 Baisa dutni kidi.

Didamas 1:

Didamas 1:

Didamas 1:

Papus kat:

Papus kat:

Papus kat:

6. Kal uduhna sak yakat laihwi talana karang ki amput dawi nining yakat kalbaunin kidi Kaunas talnin kidi kilna bani yakat talnin ki. Minikyakwa, Yksih barakwa, Barangni barakwa dawi waihnila balna. Adik nuhni kulnin ki waiku balna bayakwa yakat kurih as pasyakat kaput bik kulwi talnin yamnin balna yakat (Sumalwa, wisamni tadi munwi yakwa) kidik ka-rang ki sumalnin tunan balna.

8.7. Laihwi talna kilna as kakau yamak yakat sangni dunin kidi.

Kakau yamak pani 3 walyaknin.

- Ma sangni dauhbin.
- Papuskat sangni duwa kidi.
- Ma sangni uba duwi.

¿Amput yamdarang yah laihwi tadi munna as karang ki ma sangni kidi?

I. Pani walyakna yakat ais yamnin kidi yulna sak ki pa as kidi lain 10 dawi lain bani pan 10 duwa karang ki.

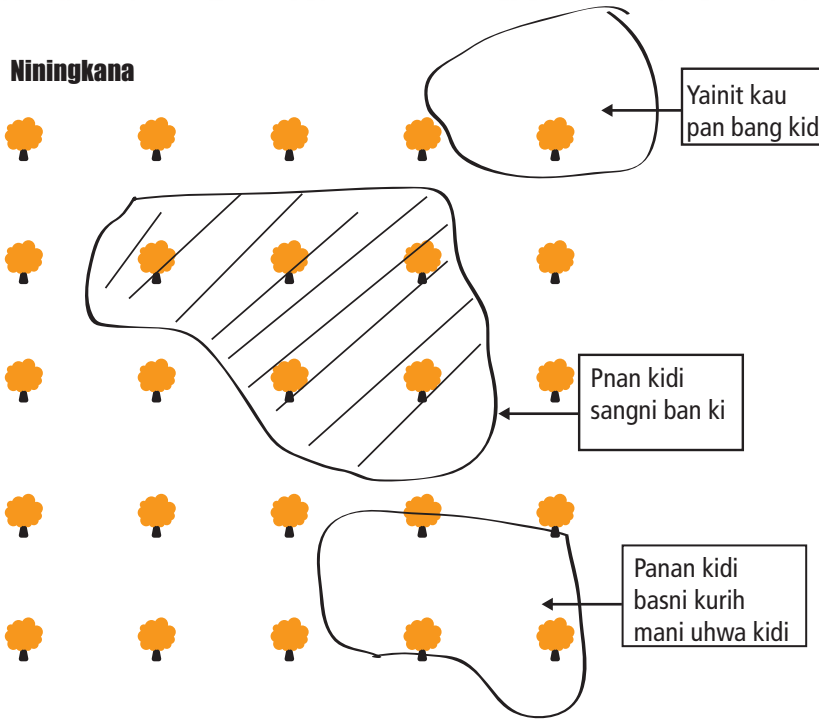
II. Bas as kau likna 100 duwa kidi kuldi kakau panan 100.

III. Lain tuna kaupak watdi mawakat dawak watdi taldi pan tuna sak yakat.

IV. Mark munnin ki basni ankat sang ni duwa yakat panan bani yak:

- Panan kidi basni kurih mani uhwa kat wayan yamnin ki yainik munah sangni kalanin awas.
- Panan kidi basni kurih mani uhwas kat wayan yamnin ki yainik kidi sangni kuswi bangnin ki .
- Laihwi talnin ki pan balna kidi yanit kau sanni kalawa balna kidi walyaknin ki.

Niningkana



Rawasdibin

- Kakau yapak kidi kurih mani yak sannu duwa kidi:
- Kakau yapak kidi wasma mani yak sannu duwa kidi:
- Sannu kidi bitik diyanin

Papatni wayakani Uba dibahni

